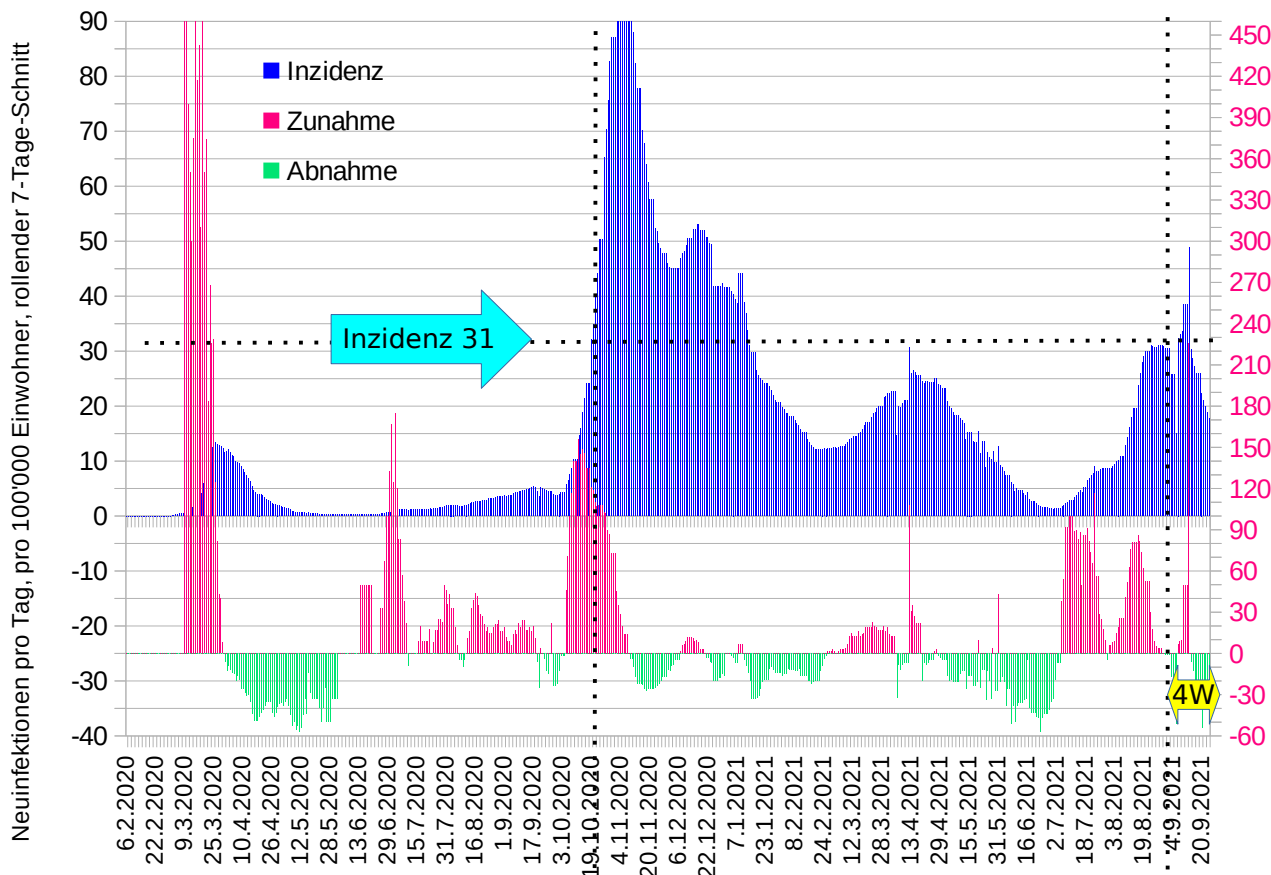


### Inzidenz

Daten

24.9.2021  
27.8.2021

17.7  
31



Zuwachsrate, rollender 7-Tage-Schnitt, in 1 Woche, in %

### Todesfälle

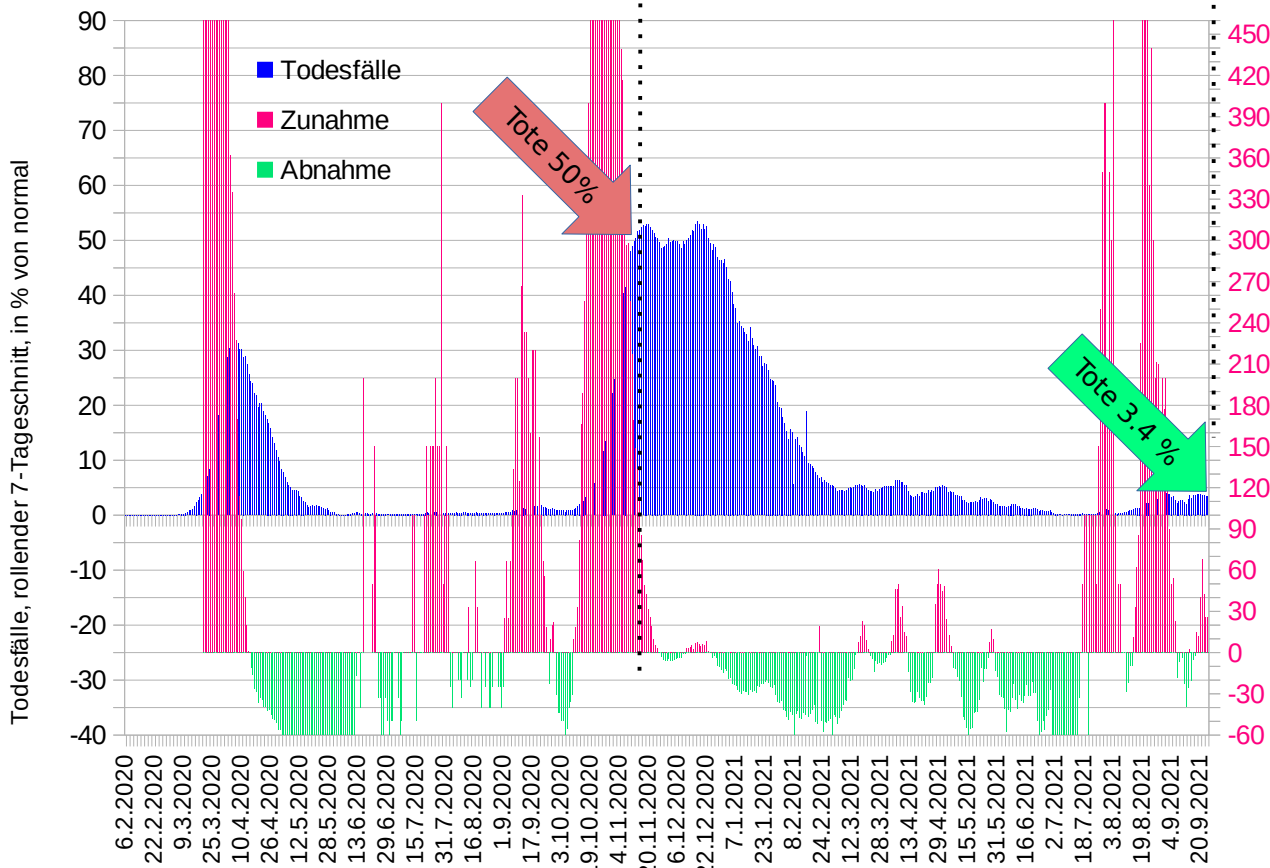
Daten

24.9.2021  
11.4.2021

3.4 %  
50 %  
14.7

Vergleich

Faktor



Zuwachsrate in 2 Wochen in %, rollender 7-Tageschnitt